



QIG

IP CAMERA

**AIRLIVE
TECHNOLOGY CORP**

www.airlive.com

Connecting the camera to system (reference only)

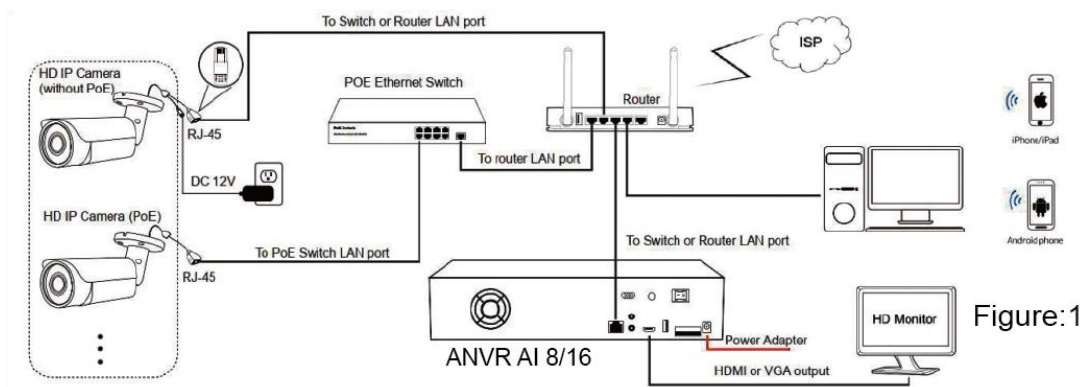


Figure 1: Working With PoE switch and NVR

1. To power ON the camera, a PoE switch is used, when a PoE switch is not available or the camera is connected directly to a Router. Then the DC 12V Input of the camera can be used. (By default, the camera comes without power adapter).



Figure 2: Camera Connector

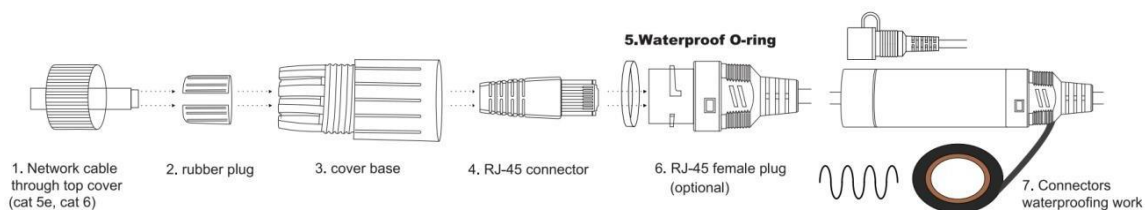


Figure 3: Waterproofing work (network connector)

2. MicroSD Card slot: For models that support a MicroSD card the max capacity is 512GB. Depending on the model, the SD slot is on the back/top of the camera marked MicroSD Slot. Note that not all models have an SD-Slot, consult the camera spec sheet for more details.

Note:

1. The camera should be connected to a 12-volt power supply if you do not use PoE (Power over Ethernet).
2. A Windows computer is more convenient to setup and troubleshooting.

Camera's IP address assignment

Default IP address: 192.168.0.123 (**DHCP**)

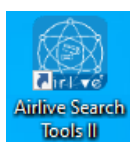
Username: admin, **Password:** 123456

Obtaining IP settings automatically by DHCP

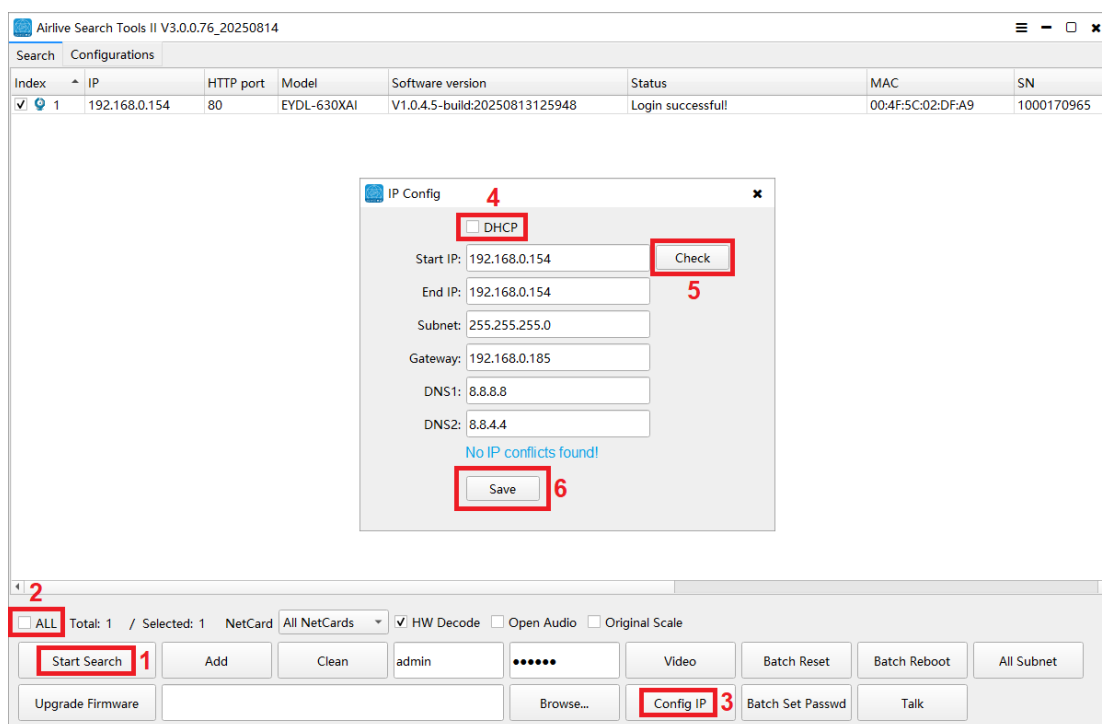
This series camera default network configuration is **DHCP** mode, you can get IP settings assigned automatically from the LAN router or DHCP server, otherwise, the camera will set its own IP address to **192.168.0.123** in a few seconds for local access. The camera will save the obtained IP settings to **static** configuration after 24 hours continues running to keep your system working more stable.

You can install the **AirLive Search Tools II** to quickly configure the IP camera.

- Using AirLive Search Tools II (SettingTool)



To download the AirLive Search Tools II
Visit **www.airlive.com/download**
and select your IP Camera software.



Click **Start Search** and all your cameras in the LAN will be listed in seconds.

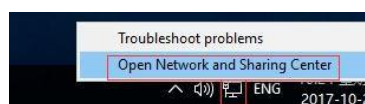
If you prefer to assign camera IP address manually, you'd better confirm the IP network planning and avoid IP address conflict.

It is user-friendly that the search tool can calculate the selected cameras number to match the range of Start IP and End IP.

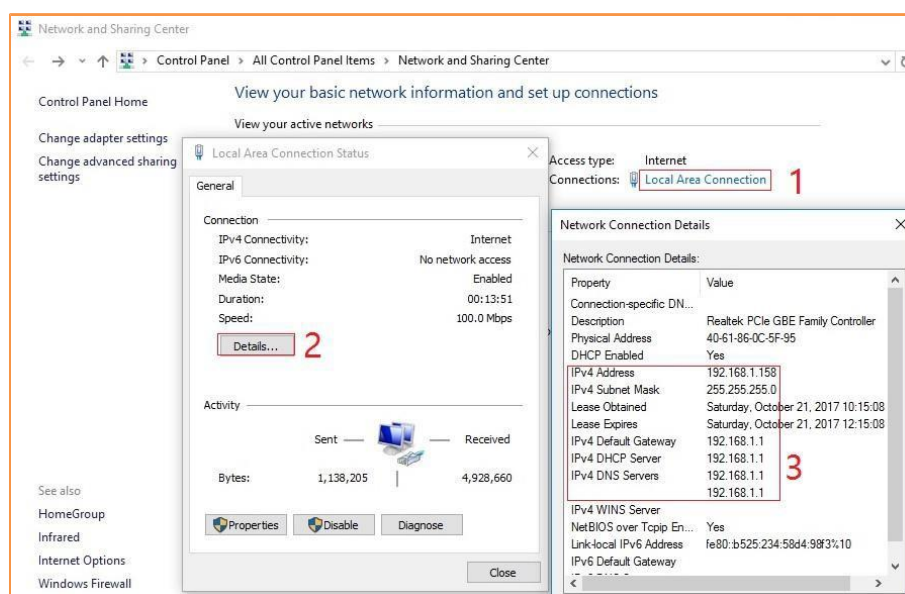
Tips:

1. **Net Card:** Only select the desired network adapter to search.
2. **Batch Reset:** Restore to factory default settings.
3. **Video Preview:** Double-click list items.
4. **Go to Web:** right-click list item and select web.
5. **Upgrade Firmware:** Select the checkbox, click **Browse** then click **Upgrade Firmware**.

How do I find out the LAN configuration via Windows GUI?



Right-click on the Network icon and select **open Network and Sharing Center**.

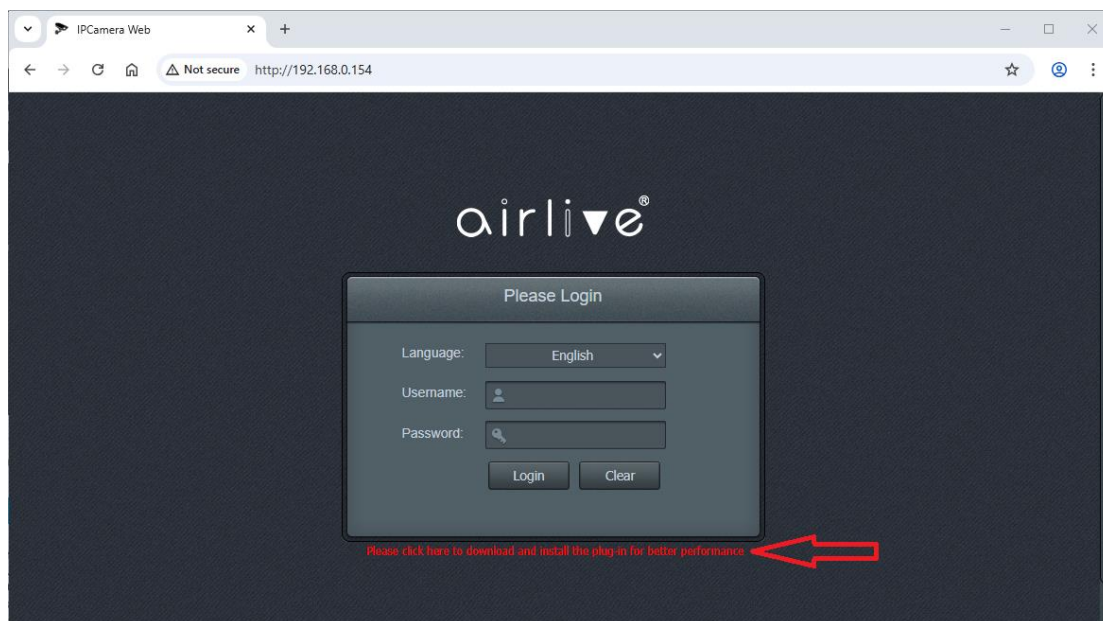


Working with Internet browser

To access the camera's web interface, type in the IP camera's IP address into a browser URL bar to gain access to the login page.

Please check your current network connection or modify IP address is the same subnet if login page cannot load.

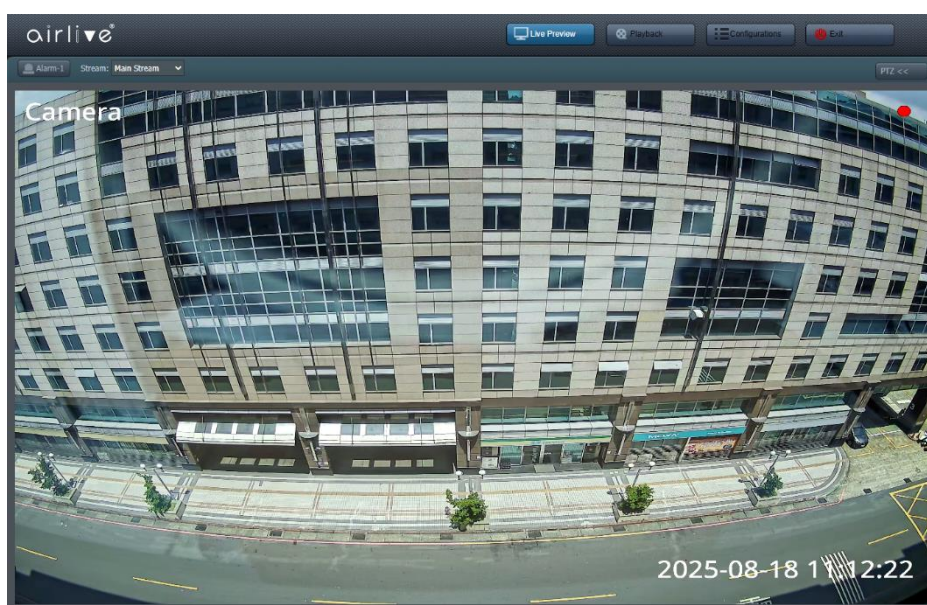
(Default username: admin, Password: 123456)



You can use Chrome, Edge, Firefox, Safari to access the camera web service page. Windows OS is perfectly supported with plug-in; other OS can use HTML5 plug-in free.

At the first-time login, the web browser will prompt the plug-in link to download for video player. Please download and install it without worry about the security (Some antivirus could give a warning). The camera Live view also works without installing the plug-in, but when you have trouble with the image or want to use the extra function like download and snapshot it is suggested to install the plug-in

After restart or refresh your web browser and allow the plug-in player to run. The Live video will start playing automatically with the extra features, after logging in successfully.



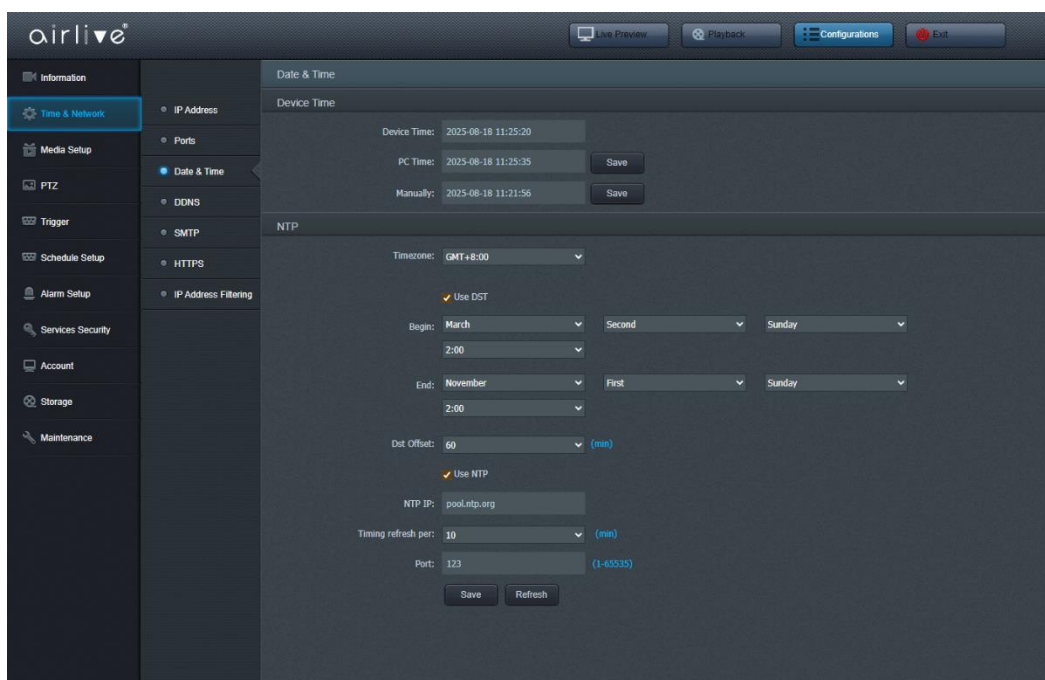
Note:

1. Windows OS is perfectly supported; other OS may lack some functions, or play less smoothly because of the HTML5 decoding deficiency.
2. Only the **Motorized Auto Focus** or **PTZ** cameras can do optical **Zoom In** and **Zoom Out** in PTZ button page.
3. Keeping pressing on live video and dragging for **Digital Zoom**. (Windows only)
4. If there is a delay in video response when accessing remotely, please switch to Sub Stream instead.

Configurations

- 1) To setup the camera **Time & Date**

➤ **Configurations > Time&Network > Date&Time**



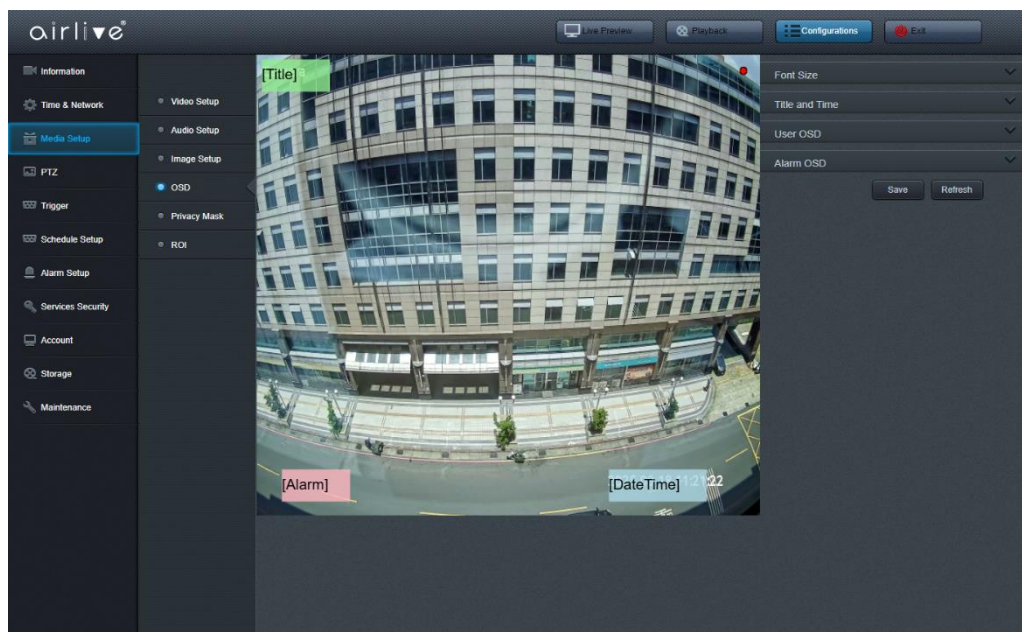
There are two, time update modes available - **Manual (Sync with PC)** and **NTP**.

DST (daylight-saving time) is available for time offset adjust automatically.

NTP (network time protocol) is used for scheduled getting correct date and time from Internet automatically.

- 2) To name the camera title

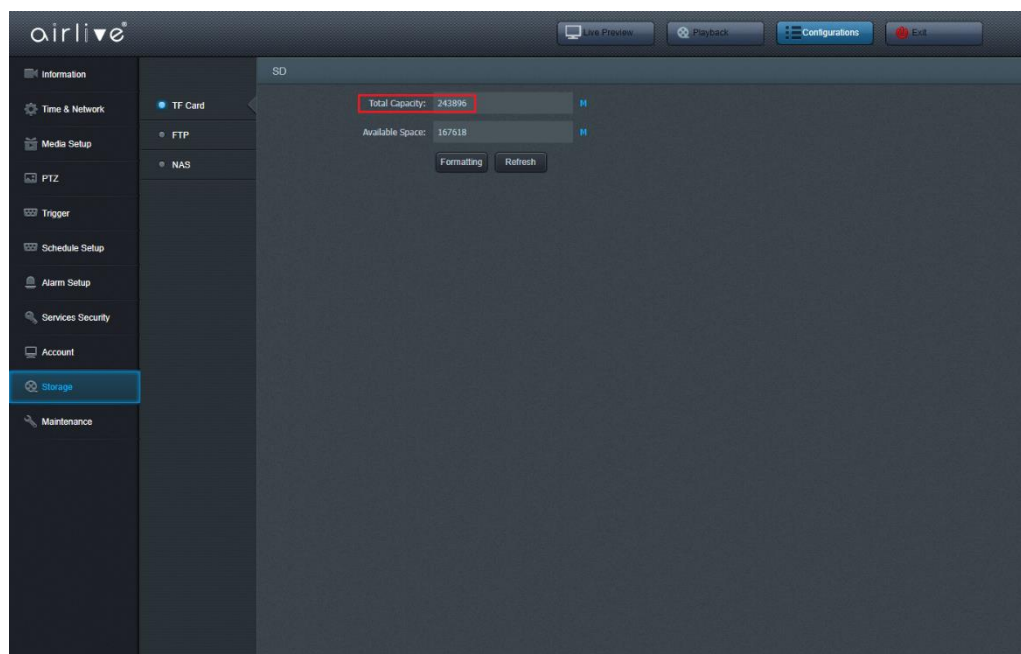
➤ **Configurations > Media Setup > OSD**



Modify the title as you need, drag the items to adjust the showing position (if needed), click Save.

3) TF memory card installation (Depending on model)

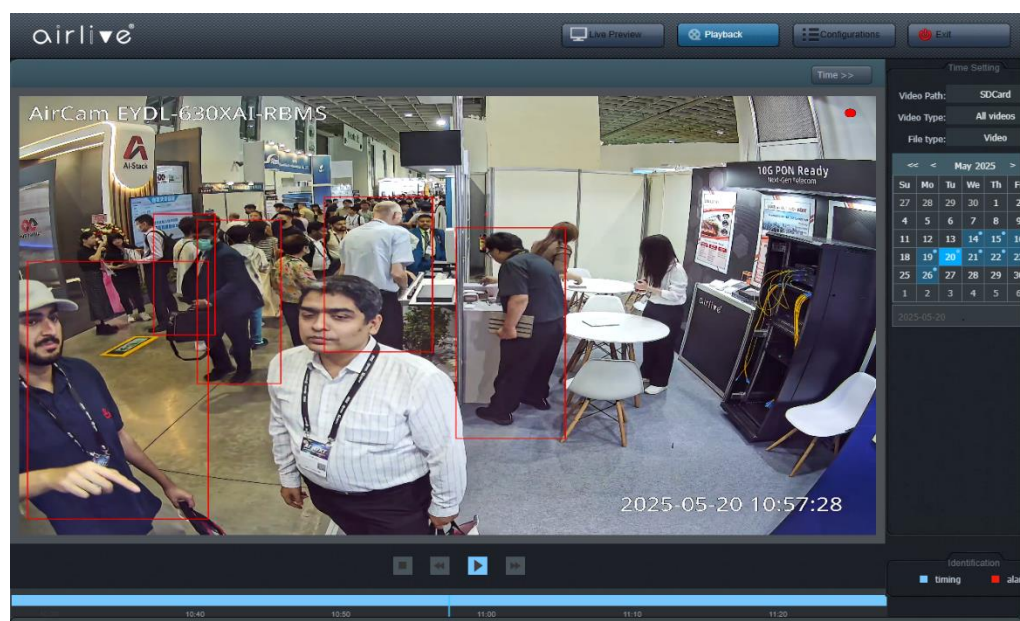
➤ **Configurations > Storage > TF Card (with Micro-SD slot only)**



It is suggested to install the memory card (Class10: 32GB - 512GB) for local storage if you need playback from camera.

Once the memory card is inserted, the camera will format it, show capacity and start 24 hours recording with a red status icon at the top-right corner of the video automatically.

4) Playback and Download video



When a memory card is installed there is a red dot icon at the live video top-right corner, users can search and playback the recorded videos and pictures.

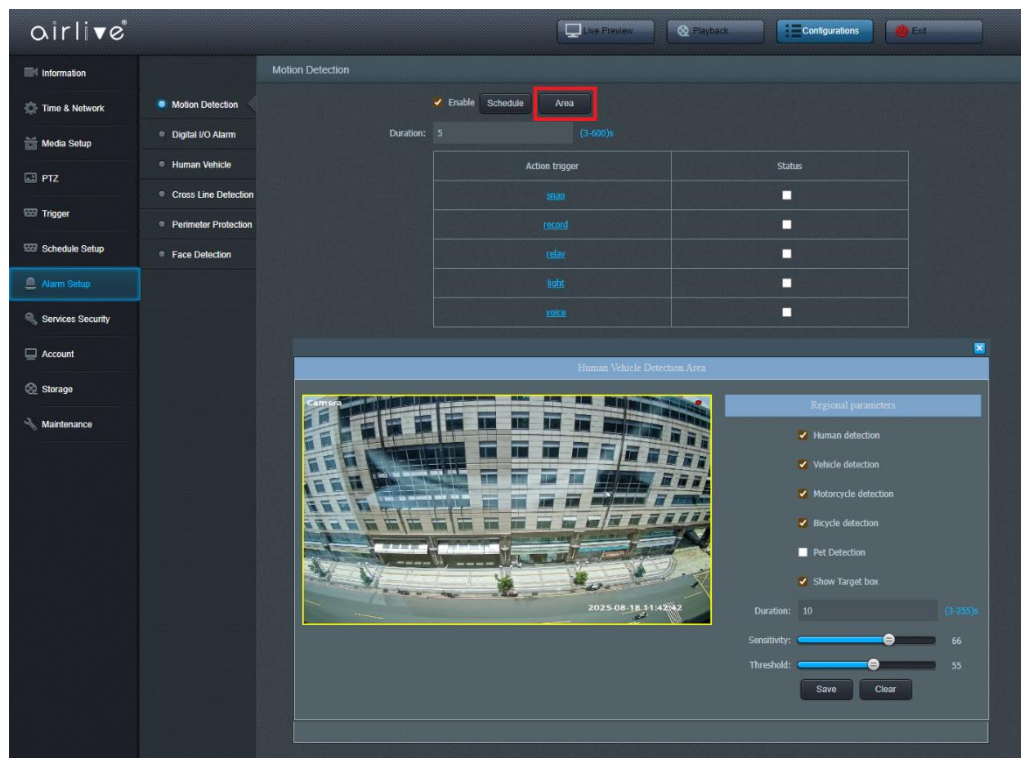
Playback: click **Playback** button, select desired date from right calendar, double-click the time bar (red is event recording, blue is normal record).

Backup: scrolling mouse wheel to zoom in on time bar, drag to select the video clip, right-click and click the **Download** menu. The plug-in must be installed to be able to use the Download function.

File path: C:\Users\<>your name>\AppData\Local\NsdPlayerV4\record

5) To setup Smart **Human Detection** and **Vehicle Detection**

➤ **Configurations > Alarm Setup > Human Vehicle Detection**



Detection target: human / vehicle / bicycle

Detection Area: default full-screen / user-defined drawing

Show target box: display a rectangular border to surround the target

Threshold: filter small target

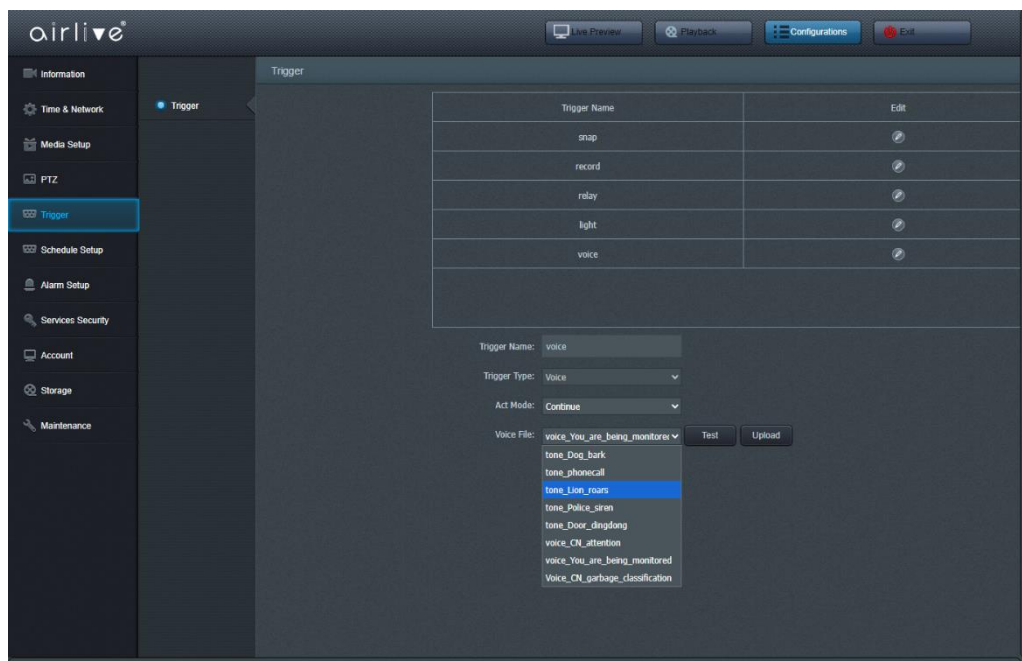
Action trigger: 1. Snap -- trigger snapshot when event happens.

2. Record -- trigger snapshot when event happens.

3. Relay -- trigger alarm out relay and Red & Blue flashing.

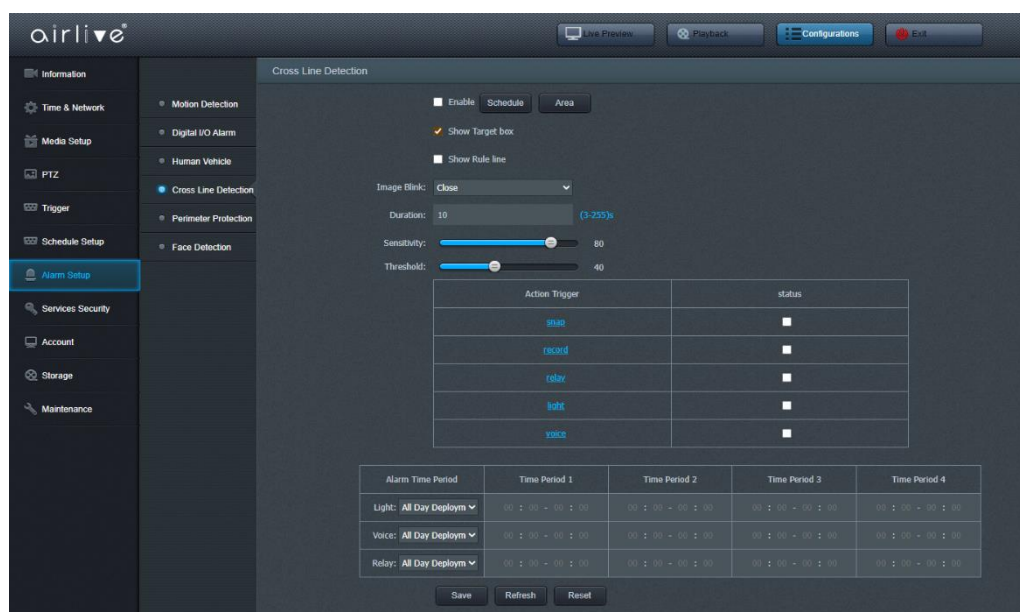
4. Light -- trigger white lights flashing as warning.

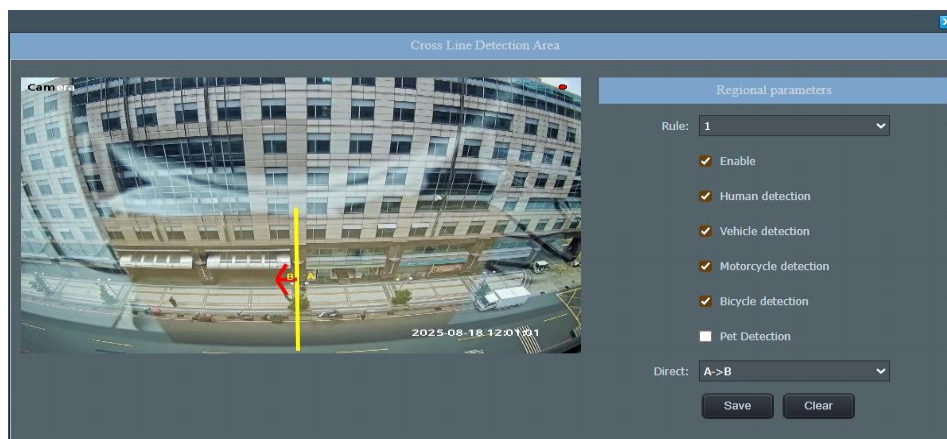
5. Voice -- trigger loudspeaker voice or tones playing



6) To setup Smart **Line Crossing Detection**

➤ **Configurations > Alarm Setup > Cross Line Detection**

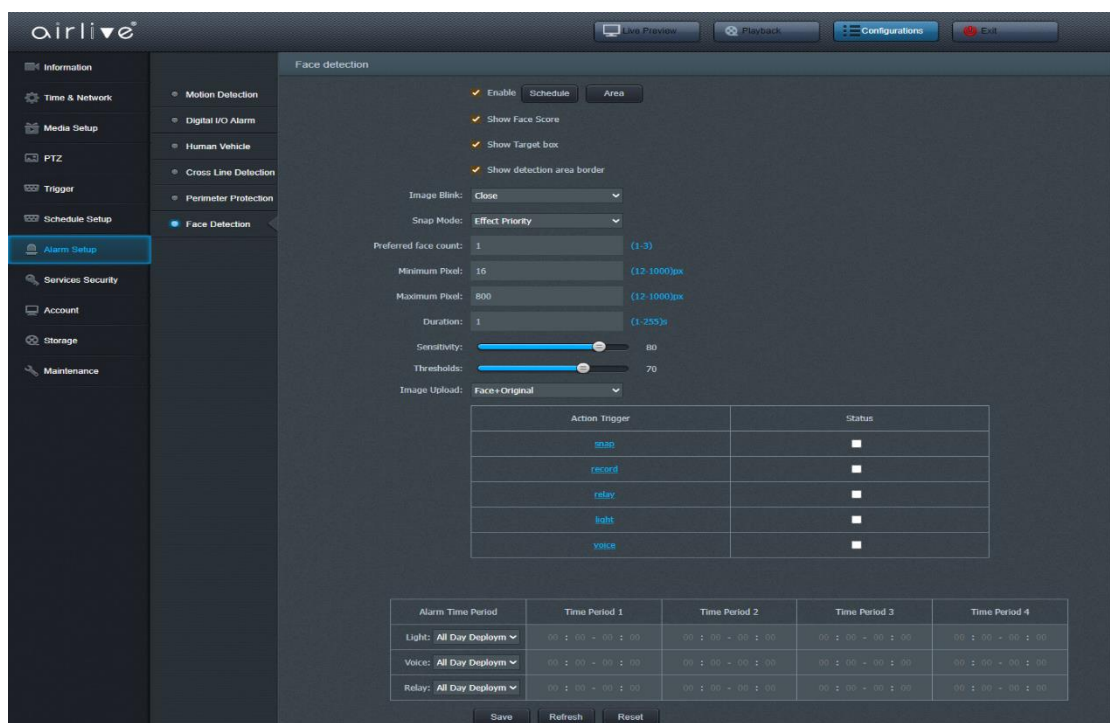




- Setup step: 1. check the **main enable** checkbox.
2. click "**Area**", select a rule and check the **sub enable** checkbox.
 3. drawing alarm rule line when needed.
 4. select detection target and moving direction (A->B, B->A, A<->B).
 5. select the trigger actions when desired.

7) To setup Smart **Face Detection**

➤ **Configurations > Alarm Setup > Face Detection**

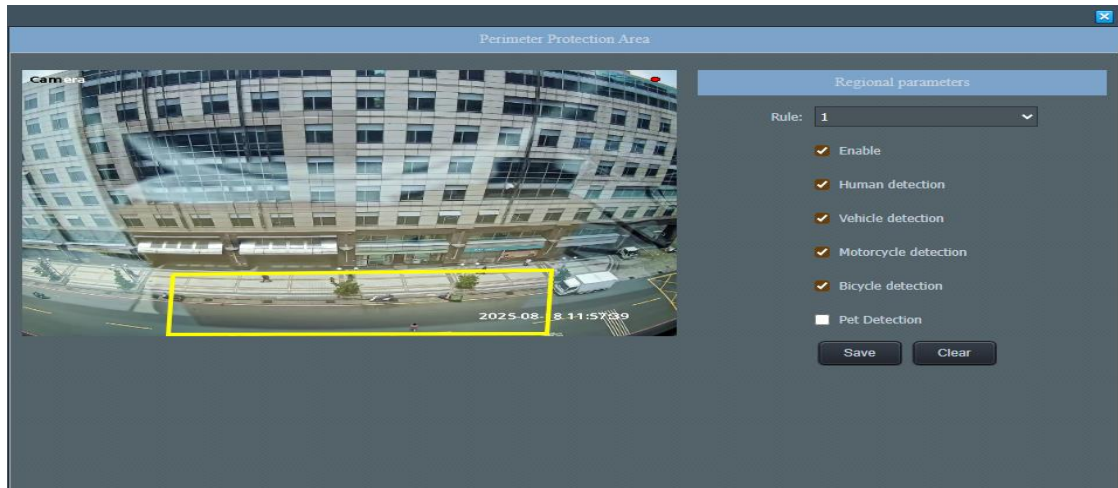


- Setup step: 1. check the **Enable** checkbox.
2. click "**Area**" (default full screen)

3. drawing detect area or schedule when needed.
4. select the trigger actions when desired.

8) To setup Smart **Perimeter Protection**

➤ **Configurations > Alarm Setup > Perimeter protection**



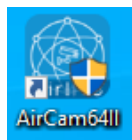
Setup step: 1. check the **main enable** checkbox.

2. click "**Area**", select a rule and check the **sub enable** checkbox.
3. drawing alarm rule block when needed.
4. select detection target
5. select the trigger actions when desired.

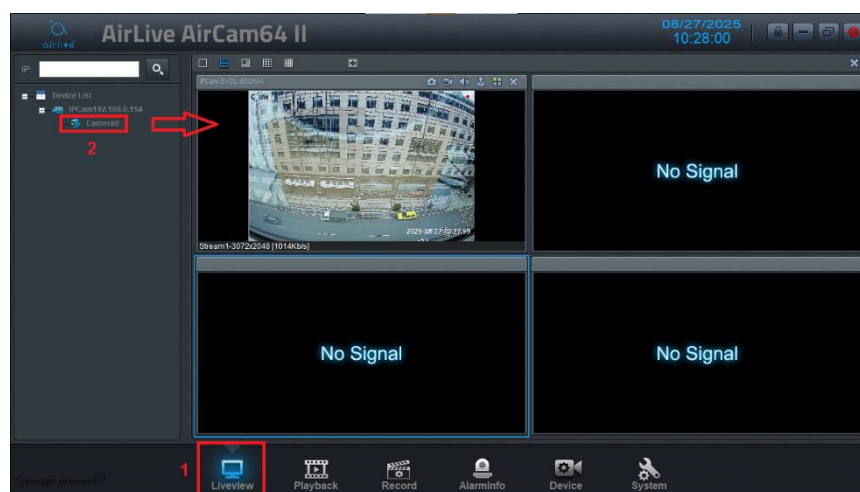
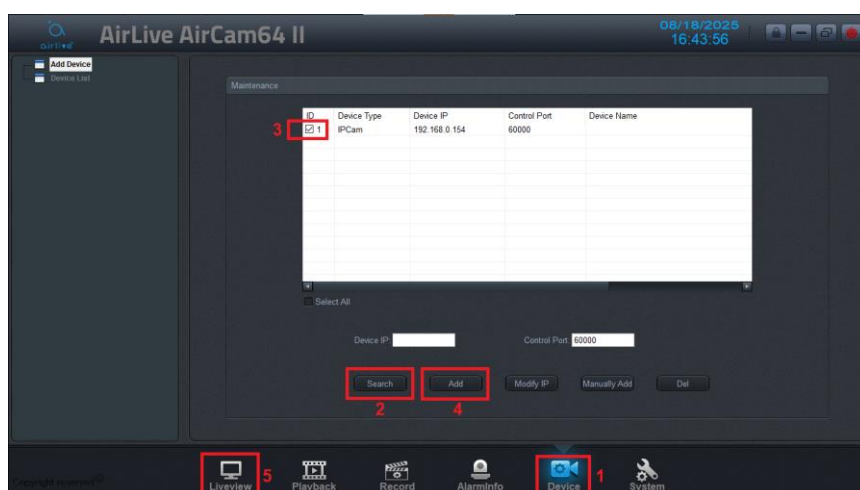
Working with VSM Software AirCam 64 II

You can install the free **AirLive AirCam 64 II** to record the camera image to a computer. Using the AirLive VMS software AirCam 64 II.

- Using AirLive AirCam 64 II (VMS)



To download the AirCam 64 II
Visit **www.airlive.com/download**
and select your IP Camera software.

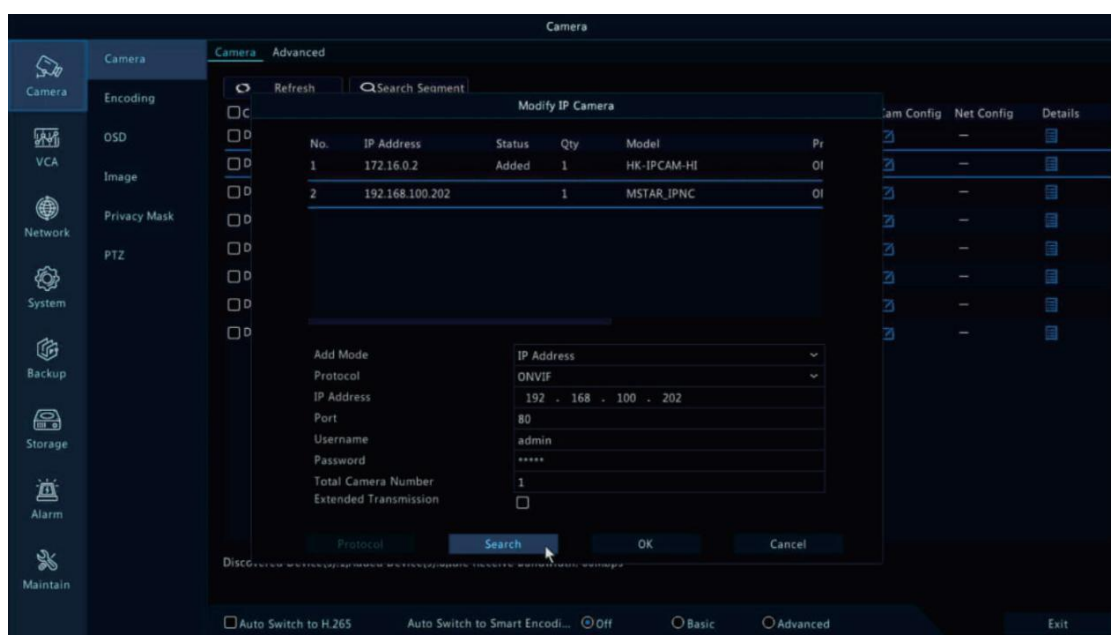


Working with NVR

The IP camera supports standard ONVIF protocol, and it can be added to the AirLive ANVR as well as third-party video recorders.

Some of the models support both H.264 and H.265 encode mode. The H.265 encode cameras can compress the video data to very low bit rates which allows more video data storage than normal H.264 cameras.

Before pairing cameras to the ANVR, make sure the ANVR and cameras have valid and matching IP address scheme.



Note: Some of the (PoE) ANVR supports **Plug & play**, which allows you to get video without manually search and add. If **Plug & play** feature is not available or not compatible, please follow the NVR manual steps and select ONVIF protocol as the pairing protocol. (Camera default password: 123456)

If the (PoE) ANVR cannot discover the connected camera or cannot display the camera video, please check its internal PoE interface IP configuration and make sure all connected cameras and ANVR (PoE) interface are in the same subnet schema.

When the AirLive ANVR is used in combination with the AirLive XAI camera, then mobile control is also possible via the Guard Viewer APP or via the new Elink Defense APP. The camera would need to be added to the ANVR and the ANVR would need to be added to the Guard Viewer / Elink Defense APP for mobile view. Please see the AirLive ANVR guide for more details.

Frequently Asked Questions

1. Why can't I open the default IP address 192.168.0.123 via web browser?

The camera is working at DHCP mode by default, it will obtain the IP settings from router automatically. Please install the IP search tool to find the camera's IP address. Camera IP address will be 192.168.0.123 if no router in the LAN.

2. How to reset the password?

1) install the AirLive Search Tool II to search for the camera IP and click **Batch Reset** button.

2) If the camera with a built-in hardware reset button and easy touched, just keep pressing it around 10 seconds.

3. How to upgrade the IP camera?

1) ask the supplier for suitable firmware,

2) use the web browser, search tool or NVR to upgrade the camera,

4. How to fetch the RTSP video stream and http snapshot?

1) VLC test Main Stream: rtsp://admin:123456@IP:554/media/live/1/1

2) VLC test Sub Stream: rtsp://admin:123456@ IP:554/media/live/1/2

3) Low resolution snapshot: http://IP/cgi/special.cgi?act=snapshot&stream=1

4) HD snapshot : http://IP/cgi/special.cgi?act=snapshot&stream=0
(some models support)

5. How to Add IP camera to NVR?

1) Make sure the NVR and IP camera are the same IP subnet.

(eg. NVR:192.168.1.x, and IP camera:192.168.1.y)

2) Try changing the protocol to ONVIF

6. How to make the NVR record in motion detection mode?

1) change the NVR record mode to Motion Detection mode

2) check the NVR screen MD icon and try playback

(Please refer to your NVR manual for NVR motion record option, camera also should enable motion detection.)

7. Where can I control the motorized auto focus lens zoom?

1) Using the camera's web interface

2) Control zoom by mobile app (ANVR)

3) Go to the setting tool configuration tab and select PTZ tab window

4) Find the PTZ menu in your NVR to control lens zoom

8. Which kinds of third-party security software can be compatible with?

Milestone, Avigilon, Pelco VxToolbox, Blue Iris, iSpy, Synology, Digifort ...